



An ISO/IEC 17025 Qualified Test Laboratory

DisplayPort™ Submission Guideline

Gloria Yang
Allion Test Labs , Inc



VESA , VESA logo and the DisplayPort Icon are trademarks of the Video Electronics Standards Association .

www.allion.com

Agenda

- DisplayPort™ Logo Usage
- DisplayPort™ Certified Logo Process
- DisplayPort™ CTS 1.0 – 1.1 Transition Plan



An ISO/IEC 17025 Qualified Test Laboratory

DisplayPort™ Logo Usage

Gloria Yang
Allion Test Labs , Inc



VESA , VESA logo and the DisplayPort Icon are trademarks of the Video Electronics Standards Association .

www.allion.com

Logos

Three types of Logos:



DisplayPort™ Trademarked Icon



DisplayPort™ Certified Logo



DisplayPort™ Multimode Icon

The DisplayPort certified Logo, the DisplayPort Icon and the DisplayPort Multimode Icon are trademarks of the Video Electronics Standards Association, registered in the U.S. and other countries.

*DisplayPort™ Trademarked Icon**



- Use for DisplayPort™ devices
- May be applied to product, package, other
- Does not signify any testing or other qualification
- ™ Not required on Cable or Product
- Requires license agreement
- Does not require VESA membership



*See VESA DisplayPort™ Trademark Icon License Agreement for full details

DisplayPort™ Certified Logo*

- Device must be tested at an Authorized Test Center to bear the Logo
- May be applied to product, package, other
- Requires license agreement, renewed annually
- Requires VESA membership or \$1500/year license fee



*See VESA DisplayPort™ Compliance Certification Logo License Agreement for full details

DisplayPort™ Multimode Icon*

- Use for DisplayPort™ devices that have DP Input or Output *and* HDMI/DVI Input or Output
- May be applied to product, package, other
- Does not signify any testing or other qualification
- Use with DP Certified for ATC-tested and approved devices
- ™ Not required on Cable or Product
- Requires license agreement
- Does not require VESA membership



*See VESA DisplayPort™ Trademark Icon License Agreement for full details. The DisplayPort™ Multimode Icon is a trademark of the Video Electronics standards association, registered in the U.S. and other countries.

DisplayPort™ Logo Use Table



Logo	Usage	Device Type	License?
	Any Use	Any Product	
	Product has this Feature	Source, Repeater, Dongle	
	Product has Passed ATC Test	Source, Sink, Repeater	
	Product has Passed ATC Test, Product has this Feature	Source, Repeater	



An ISO/IEC 17025 Qualified Test Laboratory

DisplayPort™ Certified Logo Process

Gloria Yang
Allion Test Labs, Inc



VESA, VESA logo and the DisplayPort Icon are trademarks of the Video Electronics Standards Association.

www.allion.com

DisplayPort Certified Logo Process



Steps You must complete to use the DP Certified Logo and have your product listed on www.displayport.org:

- Submit your product to Authorized Test Center for compliance testing

Step 1: Client Request for Testing

- 2 Sets of Device Hardware
- Application Form
- Operation Instruction if necessary
- Payment

Step 2: Testing Start

- 3 working days per testing round

Step 3: Allion issues report to VESA review the report.

- It will take around 3 days.

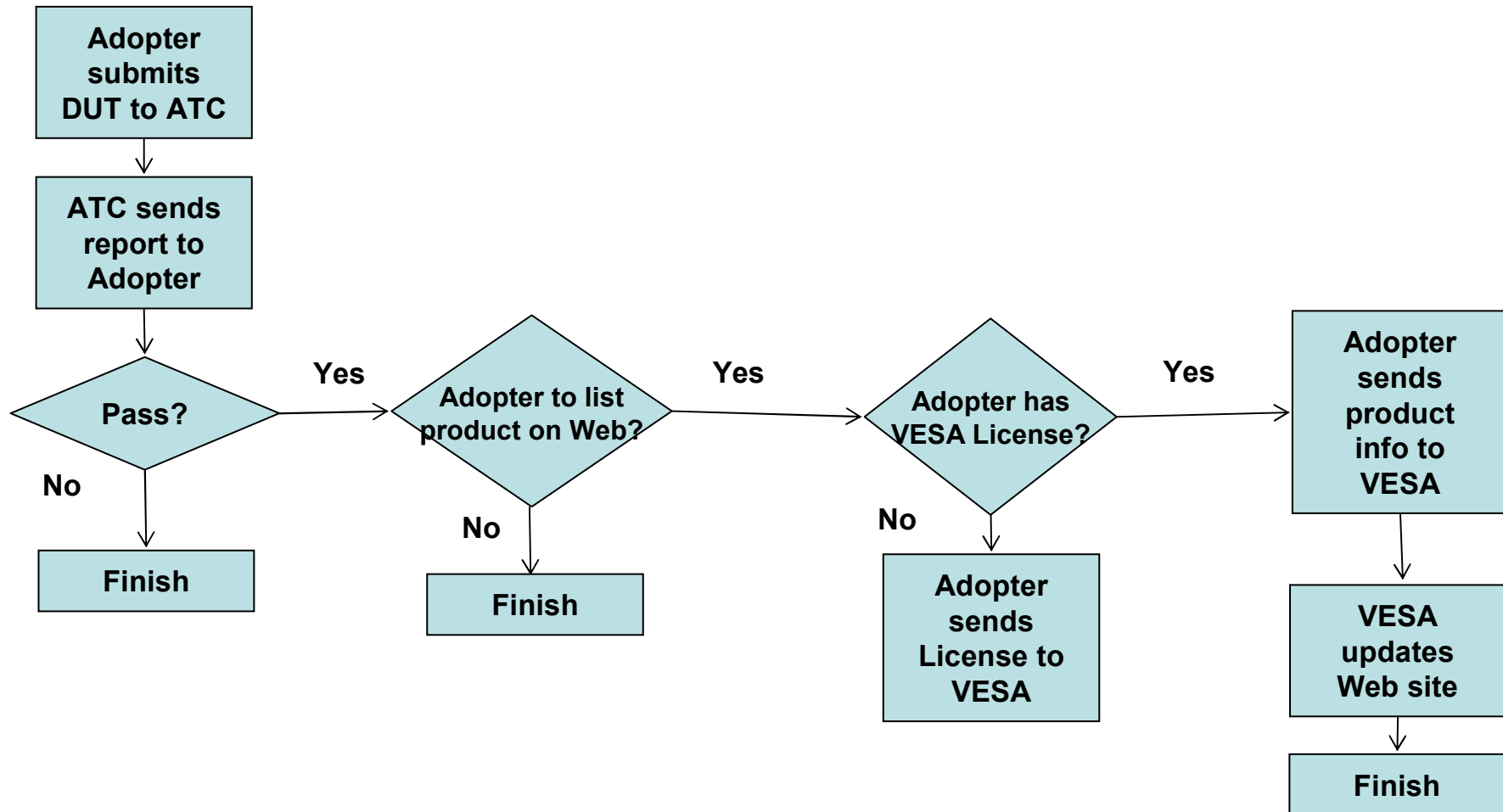
Step 4: If resulted fail, Debugging service available (upon Client's request)

DisplayPort Certified Logo Process

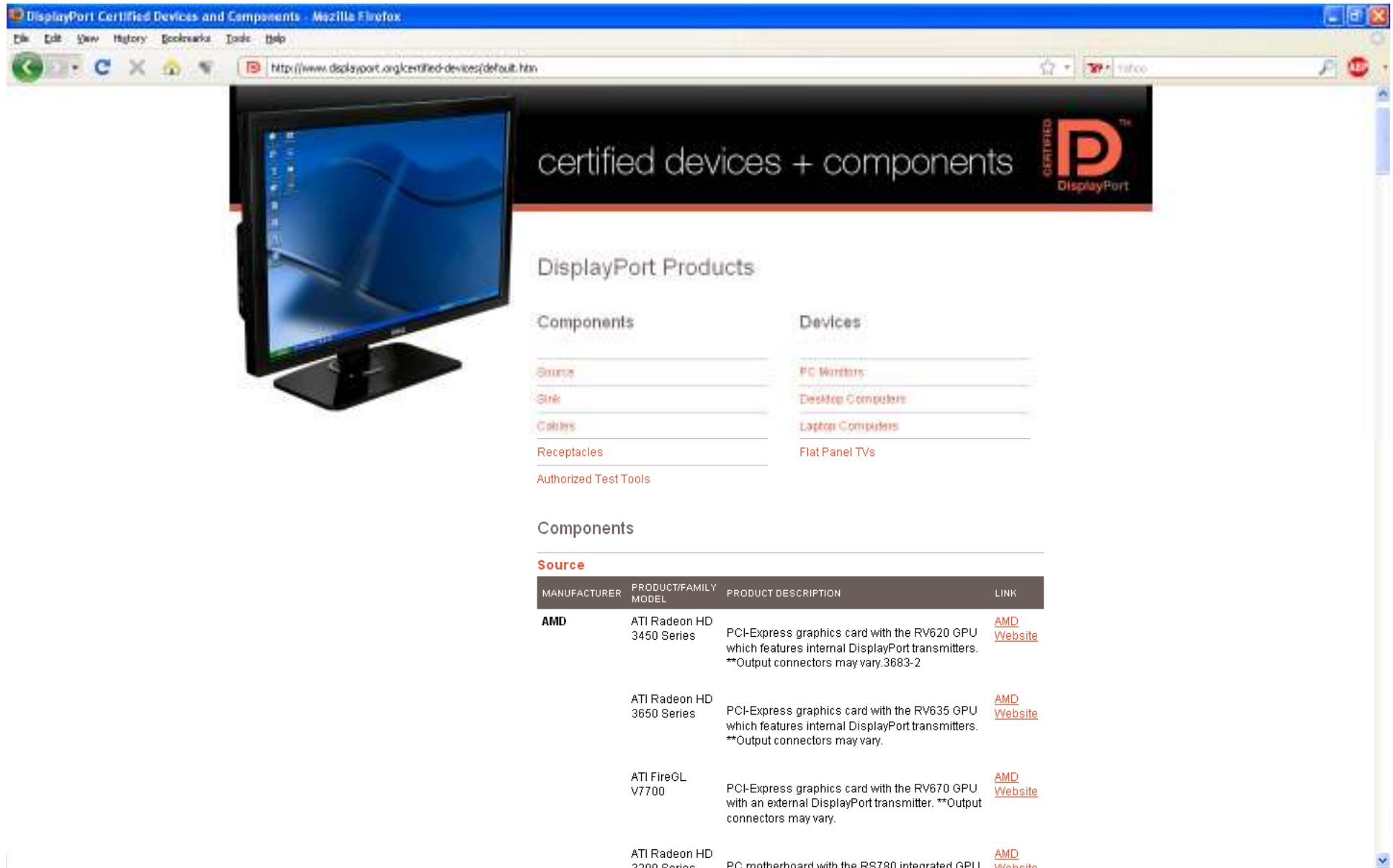


- Receive “Pass” report from ATC
- Do you have a DP Certified Logo License?
 - Get application from <http://www.displayport.org/compliance-standards/default.htm>
 - Free to VESA members, \$1500/year for non-members
 - One license per company, not per product
- Send product information to moderator@vesa.org for listing on <http://www.displayport.org/certified-devices/default.htm>
 - Send Manufacturer name, Product/Family Model, Product Description, Link to product web site
 - Listing is optional, not required.
- ATCs are required to keep test specimens for 6 months

DisplayPort Certified Logo Process Flow for Adopter



http://www.displayport.org/certified-devices/default.htm - Example



DisplayPort Certified Devices and Components - Mozilla Firefox

http://www.displayport.org/certified-devices/default.htm

certified devices + components

DisplayPort

DisplayPort Products

Components	Devices
Source	PC Monitors
Sinks	Desktop Computers
Cables	Laptop Computers
Receptacles	Flat Panel TVs
Authorized Test Tools	

Components

Source

MANUFACTURER	PRODUCT/FAMILY MODEL	PRODUCT DESCRIPTION	LINK
AMD	ATI Radeon HD 3450 Series	PCI-Express graphics card with the RV620 GPU which features internal DisplayPort transmitters. **Output connectors may vary.3683-2	AMD Website
	ATI Radeon HD 3650 Series	PCI-Express graphics card with the RV635 GPU which features internal DisplayPort transmitters. **Output connectors may vary.	AMD Website
	ATI FireGL V7700	PCI-Express graphics card with the RV670 GPU with an external DisplayPort transmitter. **Output connectors may vary.	AMD Website
	ATI Radeon HD 3300 Series	PC motherboard with the RS780 integrated GPU	AMD Website



An ISO/IEC 17025 Qualified Test Laboratory

DisplayPort™ CTS 1.0 – 1.1 Transition Plan

Gloria Yang
Allion Test Labs , Inc



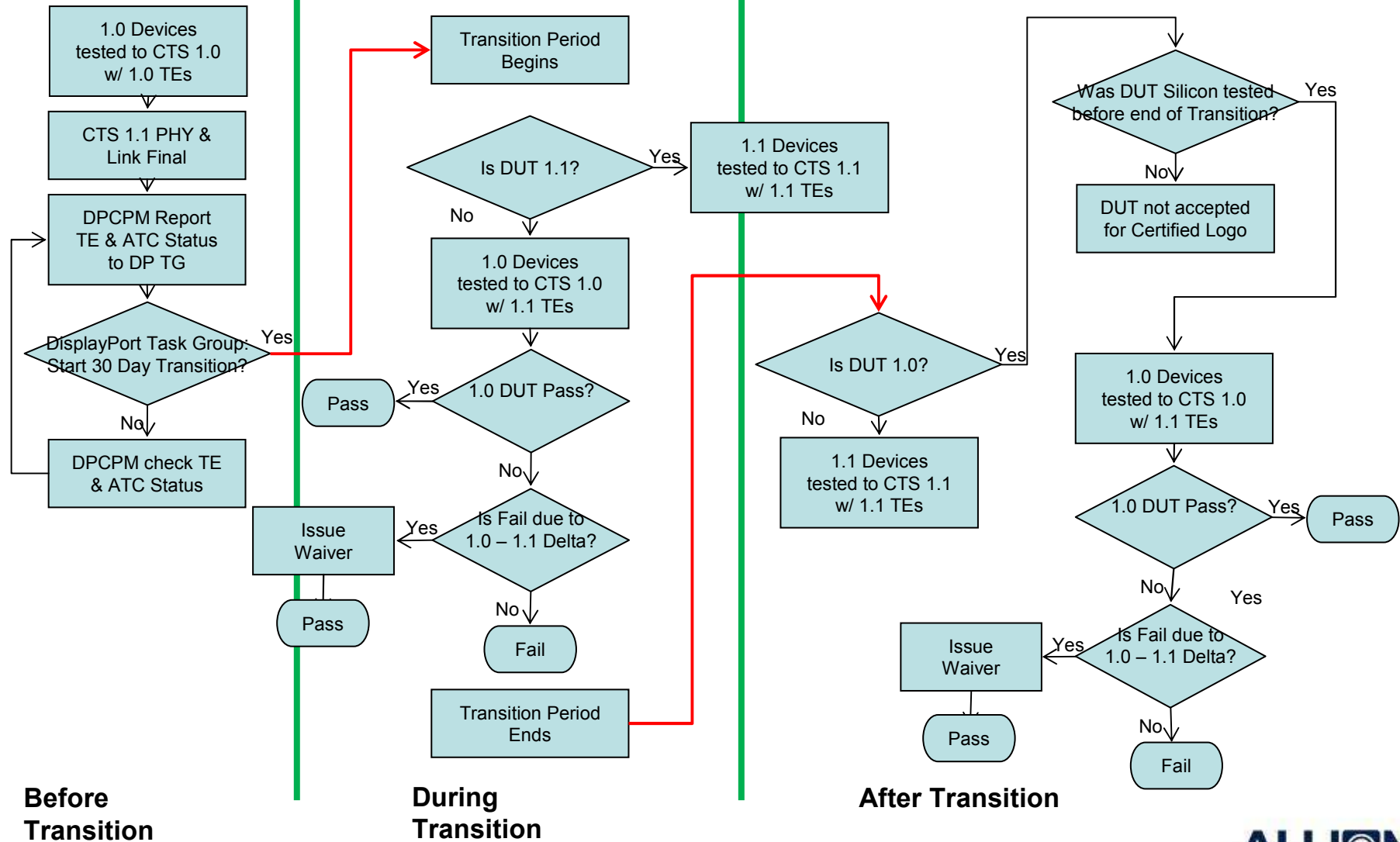
VESA, VESA logo and the DisplayPort Icon are trademarks of the Video Electronics Standards Association.

www.allion.com

DisplayPort CTS 1.0 – 1.1 Transition Key Points

- Prior to the release of the CTS 1.1 for PHY and Link Layer, devices submitted to Authorized Test Centers for DP Certified Logo testing will be tested to the requirements of CTS 1.0.
- When the DP Task Group agrees to start the Transition Period, all testing will be done using 1.1 Test Equipment (TEs).
- 1.0 devices submitted during the Transition period and tested on 1.1 TEs shall be Passed via waiver if shown to meet 1.0 requirements yet Fail on 1.1 TEs.
- The Transition Period will last 30 days.
- New devices based on silicon that was certified as 1.0 prior to the end of the Transition period will be accepted after the Transition period, until silicon end-of-life.

DisplayPort Compliance Test Specification 1.0 to 1.1 Transition Process



Thank you for your attention

➤ Questions?



VESA, VESA logo, the DisplayPort™ certified Logo, the DisplayPort™ Icon and the DisplayPort™ Multimode Icon are trademarks of the Video Electronics Standards Association, registered in the U.S. and other countries.