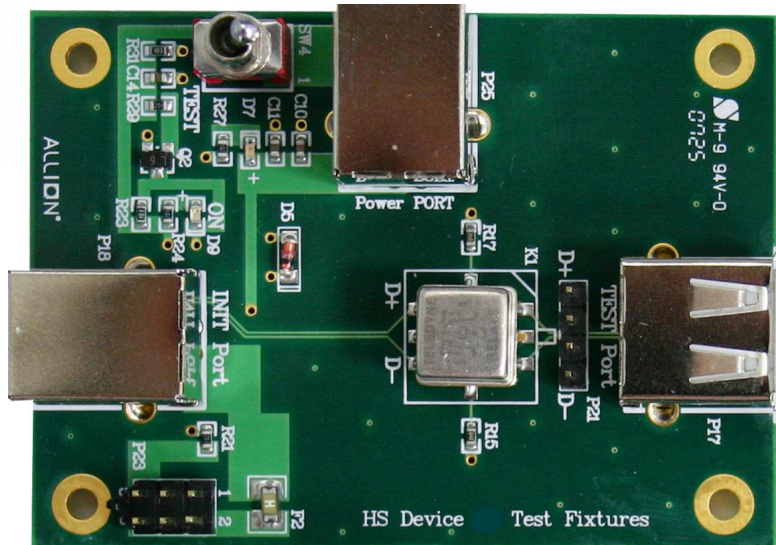




USB HS Device

Electrical Test Fixture

Part No.: USB-TF-HS-EL



## Application

- Design for High Speed Device Upstream Electrical Test (EL\_21, 22, 25, 27, 28, 29, 31, 38, 39, 40 and 9)
- Related with “**USB-IF Device High-Speed Electrical Test Procedure**” Section 4.4
- Power Consumption: Normal Mode: 2mA Test Model: 88mA
- Can apply external power over USB cable from “Power Port”
- “INIT Port” is for link with Host, and “TEST Port” is for link with Device Under Test

## Specification

- 70mm x 50mm x 1.4mm
- Operating Temperature 0° ~ 55° C

### Contact Information:

Tel: +886-2-26557877

E-mail: [service@allion.com](mailto:service@allion.com)

URL: [http://www.allion.com/test\\_tool\\_usb.html](http://www.allion.com/test_tool_usb.html)

Copyright© 2011 Allion Test Labs, Inc. 9F, No. 3-1, Yuan Ku Street, Taipei 11503, Taiwan, R.O.C